



BEEJAY ENTERPRISES

DIRECT OPERATED PRESSURE RELIEF VALVE – DRV

Direct Operated Pr. Relief Valve as a safety switch in the hydraulic circuit. It is designed with Guided poppet & Cushion arrangement for greater stability and noise control, available in Cartridge, Threaded and Sub-plate types.



Nominal Pressure and Flow ratings

Model	Max. working pr.(bar)	Max. flow in l/ min
DRV 06	700	30
DRV 10	400	80

LEVER OPERATED DIRECTIONAL CONTROL VALVE – DCV 10

Completely encapsulated control mechanism for protection against dirt. Five chamber design. Flexibility in rotating the operating mechanism by 90° x 4. Wide variety of spools available in sub plate model only.



Nominal Pressure and Flow ratings

Model	Max. pr. @ P,A,B (bar)	Max. pr. @ T (bar)	Max. flow in l/ min
DRV 10	350	100	100
DRV 10*-700	700	100	25

CHECK VALVE – CV

These seat type valves allow free flow from port A to port B and give leak-proof closure in opposite direction. Available as inline mounting or Sub-plate mounting as per factory & ISO standards.

Nominal flow and pressure ratings

Model Units CV06 *CV08 CV10 *CV15 CV20 *CV25

Max. Pr.	bar	315	315	315	315	315	315
Max. flow	l/min	20	30	50	80	120	120

* : Available only in threaded type



PILOT OPERATED CHECK VALVE – CIV

Seat type valves Pilot optd. Check Valve with internal drain. Threaded or Sub-plate mounting construction. Available with two pilot ratios 1:4 and 1: 16.

Nominal flow and pressure ratings

Model	Max. working Pr. (bar)	Max. flow (l/min)
CIV 10	215	80
CIV 20	315	160
CIV 30	315	350



PILOT OPERATED CHECK VALVE (MODULAR) – ZCIV

This is modular design check valves where the reverse flow is achieved by means of internal pilot pressure available from the other working port.

Nominal flow and pressure ratings

Model	Max. working Pr. (bar)	Max. flow (l/min)
ZCIV 06	315	20
ZCIV 10	315	60
ZCI 10T	315	60



PRESSURE SWITCH – IPS

Non- adjustable differential type pressure switch. Spring loaded sealed piston construction. Encapsulated design for protection against dust.

Model	Pr. Range (bar)	Max. Operating Pr. (bar)
IPS 10	10	100
IPS	Adjustable to 50,100,200,350 & 400.	400



TUBE FITTINGS

Male Stud Coupling	Straight Coupling
Male Stud Elbow	Equal Elbow / Tee
Male Stud Tee	ST. Bulk Head
Female St. Coupling	Bulk Head Elbow
St. Stand Pipe	Swivel Elbow
Banjo Coupling	Swivel Branch Tee
Hose Adapter	Swivel Run Tee



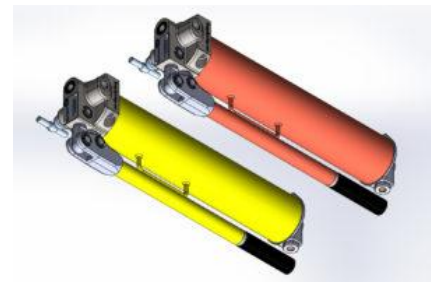
UPCOMING PRODUCTS

HAND PUMPS

Hand pumps are manually operated with human power and mechanical advantage to move fluids. Heavy duty construction, renewable internal parts by replacement. Integral Relief and Release valves with collapsible handle.

Nominal Pressure and Flow ratings

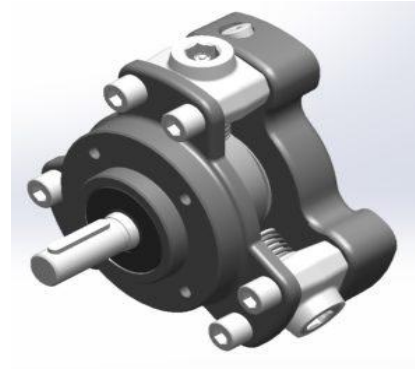
Model	Max. working pr.(bar)	Flow @ Max Pr. (cc/stroke)	Flow @ 30bar. (cc/stroke)	Tank Capacity
HPS 12 / HPS 16	700/350	2.8/5	-	250 cc
HPD 5012/5016	700/350	2.8 /5	49	13 Ltr



RADIAL PISTON PUMPS – 1RP / 1RPE

Radial piston arrangement, with 3, 5 or 7 pumping elements. Works on reciprocating principle. Bi-directional rotation, oil immersed type, Fixed delivery. Also available with extension shaft / bracket for thru drive.

Operating Pr. (bar)	550	450	350	300	250	200
No. Of Pumping Elements	Flow (l/min) @1450 rpm					
	A	B	C	D	E	F
3	1.66	2.59	3.74	4.39	5.09	5.84
5	2.77	4.33	6.23	7.31	8.48	9.73
7	3.88	6.06	8.72	10.24	11.87	13.63



THROTTLE CUM CHECK VALVE (MODULAR) – ZTC

Double throttle cum check, non-pressure compensated modular construction.

Can be used as Metering-in or Metering-out device

Nominal Pressure and Flow ratings

Model	Max. working pr. (br)	Max. flow l/min.
ZTC 06	315	25
ZTC 10	315	70

